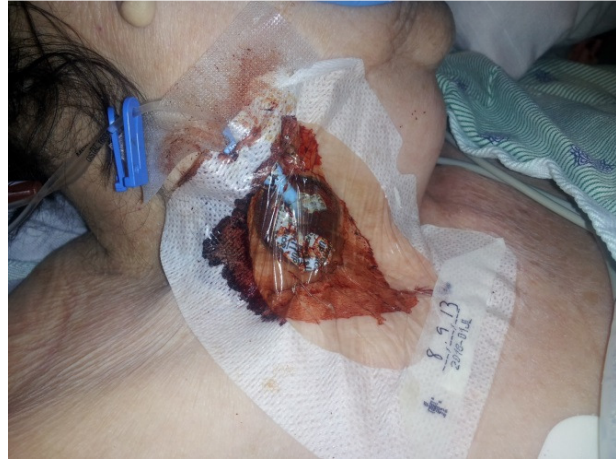


StatSeal Disc Keeps Access Sites Dry and Intact

Patient was transferred out of OR and nurse noticed a very soiled CVC dressing (Biopatch).



Nurse removed the soiled dressing and cleaned site. The site continued to ooze.



StatSeal Disc was applied to site and manual pressure was held for approximately 4 minutes. The site remained dry and intact.

