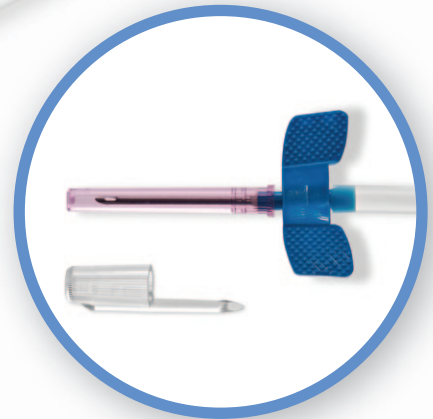




# BioHole<sup>®</sup> Dull Needle

WITH CAPICK SCAB REMOVER



The buttonhole (constant-site) technique of cannulation has been in use for almost 30 years. This cannulation technique may cause fewer complications, compared to using different needle insertion sites for each hemodialysis treatment.<sup>1</sup> The BioHole dull anti-stick needle is an excellent option for someone doing repeated cannulation in the same access site. The sterile scab remover is designed to assist in preparing the access.

- The Capick can be removed while keeping the cap on the needle, maintaining an aseptic technique

- The Capick is used in place of needles or tweezers, to remove the scab



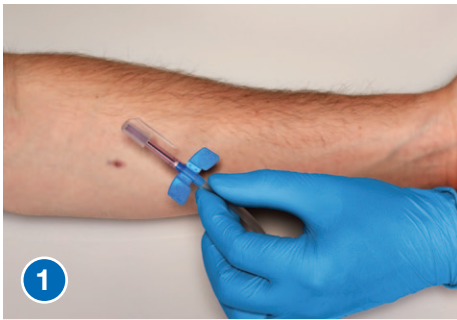
**NIPRO CONNECT<sup>®</sup>  
PROGRAM**

**Our commitment to strengthen every partnership.**

All Nipro renal products are backed by the Nipro Connect Educational Program – offering clinicians product evaluations, in-services, continuing education units (CEU's) and instructional materials.

[www.nipro.com](http://www.nipro.com)

## BioHole Needle Cannulation Technique



1

Prior to cannulation with the BioHole needle, the fistula site must be prepared following the clinic's policy and procedure.



2

To remove the scab, use the Capick scab remover. The needle cap is still in place after removing the Capick, maintaining an aseptic technique.



3

Advance the BioHole Needle into the scar tissue tunnel track. Once the flashback occurs, continue sliding the needle into the fistula. Tape and secure the needle according to policy and procedure.

## Removal of BioHole Needle



1

Remove all securing tapes from the wings and the access site. Place a sterile dressing over the access site.



2

Hold the tubing and gently pull the needle out. Dispose in approved biohazard sharps container.

## ORDERING INFORMATION

Item #	Description	Packaging
FD+142530BC-CAP	14GX1 Fixed Hub 12" Tubing with Scab Remover	50/Box 10 Boxes/Case (500)
FD+152530BC-CAP	15GX1 Fixed Hub 12" Tubing with Scab Remover	
FD+153230BC-CAP	15GX1.1/4 Fixed Hub 12" Tubing with Scab Remover	
FD+162530BC-CAP	16GX1 Fixed Hub 12" Tubing with Scab Remover	
FD+172530BC-CAP	17GX1 Fixed Hub 12" Tubing with Scab Remover	
FD+152530BCR-CAP	15GX1 Rotating Hub 12" Tubing with Scab Remover	
FD+153230BCR-CAP	15GX1.1/4 Rotating Hub 12" Tubing with Scab Remover	
FD+162530BCR-CAP	16GX1 Rotating Hub 12" Tubing with Scab Remover	
FD+172530BCR-CAP	17GX1 Rotating Hub 12" Tubing with Scab Remover	

**CAUTION:** Federal law restricts these devices to sale by or on the order of a physician.

<sup>1</sup> Kallenbach J., Gutch C.F., Stoner M., and Corea A.; Review of Hemodialysis for Nurses and Dialysis Personnel, 7th Edition; 2005; Elsevier Mosby, St. Louis, MO; pg.132.



**NIPRO MEDICAL CORPORATION**  
 200 Crossing Blvd., Bridgewater, NJ 08807  
 T: +1 (908) 393-7030, F: +1 (908) 393-7031  
[www.nipro.com](http://www.nipro.com)

© 2014 Nipro Medical Corp. All Rights Reserved.  
 BioHole is a registered trademark of Nipro Medical Corporation.  
 Printed in U.S.A. RN-DSUS-BIOHOLE Rev 0